

# Camloc

*Motion Control*

## Hydraulic Lift

### Hydro-mechanical height adjustment



The Hydraulic Lift has been designed for applications where height and positional adjustments are required such as height and backrest adjustment of hospital beds and similar medical equipment and lifting platforms.

Each Hydraulic Lift is fitted with a pedal which is used to raise or lower the height of the application. To lift the load (or extend the Hydraulic Lift) the foot pedal has to be depressed through an arc of approximately 45 degrees several times until it reaches the required height by the operator. To lower the load (or compress the Hydraulic Lift) the foot pedal is simply moved upwards by approximately 10 degrees.

Hydraulic Lifts are ideally suited to an environment where the ambient temperature is between  $-10^{\circ}$  to  $+70^{\circ}\text{C}$ .

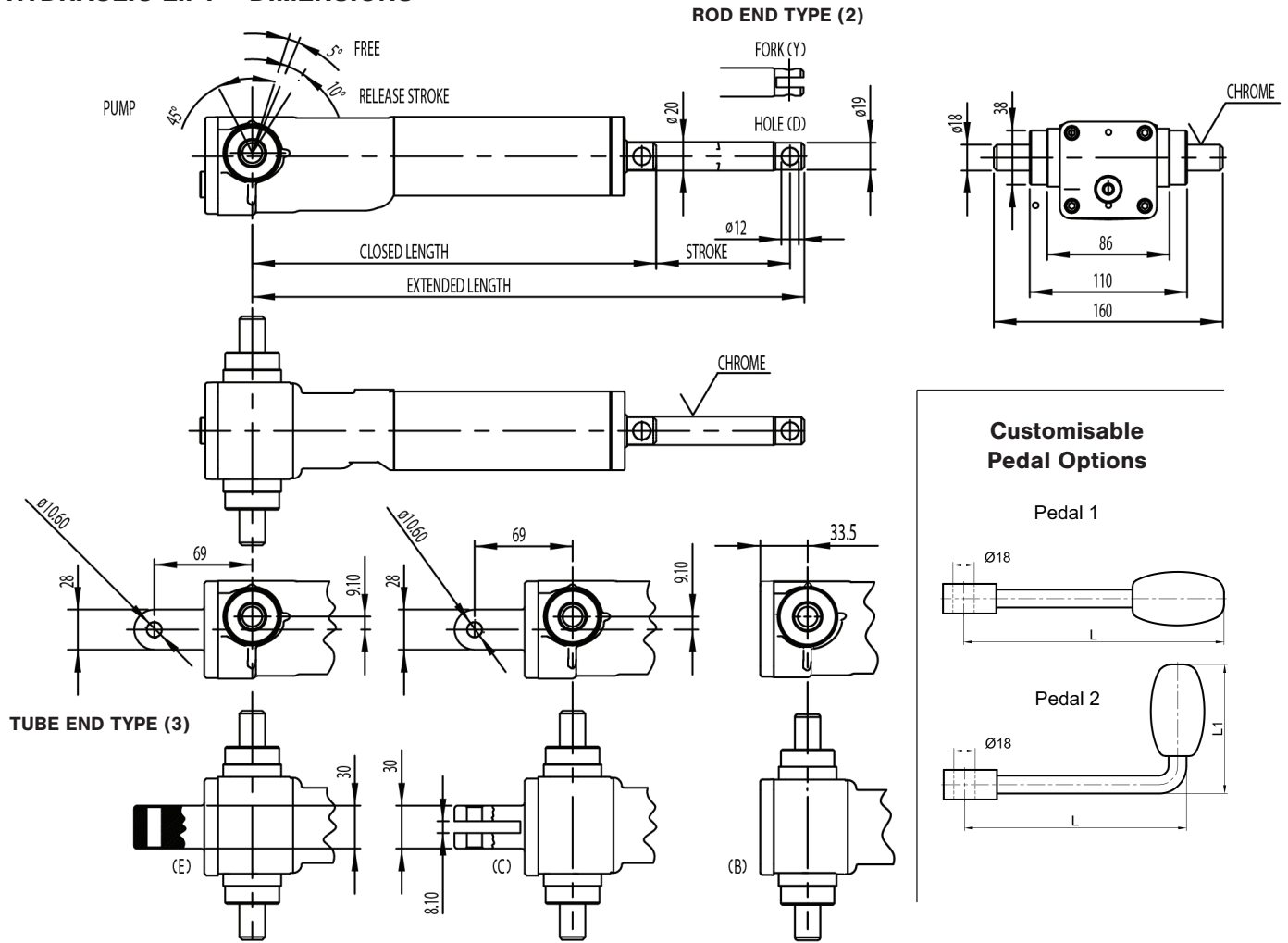
#### Typical applications include:

- Hospital beds
- Home care beds
- Examination beds
- Patients lifting and handling systems

#### Benefits

- Simple operation, lifting with a single lever
- No power supply required
- Easy installation
- Maintenance free

# HYDRAULIC LIFT - DIMENSIONS



## Sizing Chart

MODEL NO (1)	STROKE (MM)	CLOSED LENGTH*	EXTENDED LENGTH*	LIFTING FORCE daN (KG)	ROD END TYPE (2)	TUBE END TYPE (3)	LIFTING FEATURE/RATE (4)
GS-HL-8641A-	100	212	312	620	Fork (Y) or Hole (D) rod end available on all models	Eye (E) Clevis (C) or Blank (B) tube end available on all models	Normal (N) - 9mm/Pump
GS-HL-8642A-	140	252	392	470			Fast (F) - 12mm/Pump
GS-HL-8643A-	140	252	392	900			Slow (S) 6mm/Pump
GS-HL-8645A-	200	312	512	620		Normal (N) - 9mm/Pump	
GS-HL-8646A-	200	375	575				
GS-HL-8647A-	200	500	700				
GS-HL-8648A-	250	362	612				
GS-HL-8649A-	300	412	712				
GS-HL-8650A-	400	512	912	200		Fast (F) - 12mm/Pump	

\* Note: Tolerancing on stated extended and closed lengths is +/- 2mm

COLOUR OPTION (5):  RAL 9016 - WHITE (W)  RAL 7035 - LIGHT GREY (G)

## Part Number Configurator

Each Hydraulic Lift part number is made up of the five parts shown in the table below. For example If you wanted a unit with a 100mm stroke, with a Fork Rod, Clevis Tube and a Normal Lifting Feature in a White finish the configured part would be: GS-HL-8641A-Y-C-N-W.

MODEL NO (1)	ROD END TYPE (2)	TUBE END TYPE (3)	LIFTING FEATURE/RATE (4)	COLOUR OPTION (5)
GS-HL-86XXA-	Fork (Y) / Hole (D)	Eye (E) / Clevis (C) / Blank (B)	Fast (F) / Standard (S) / Normal (N)	White (W) / Grey (G)